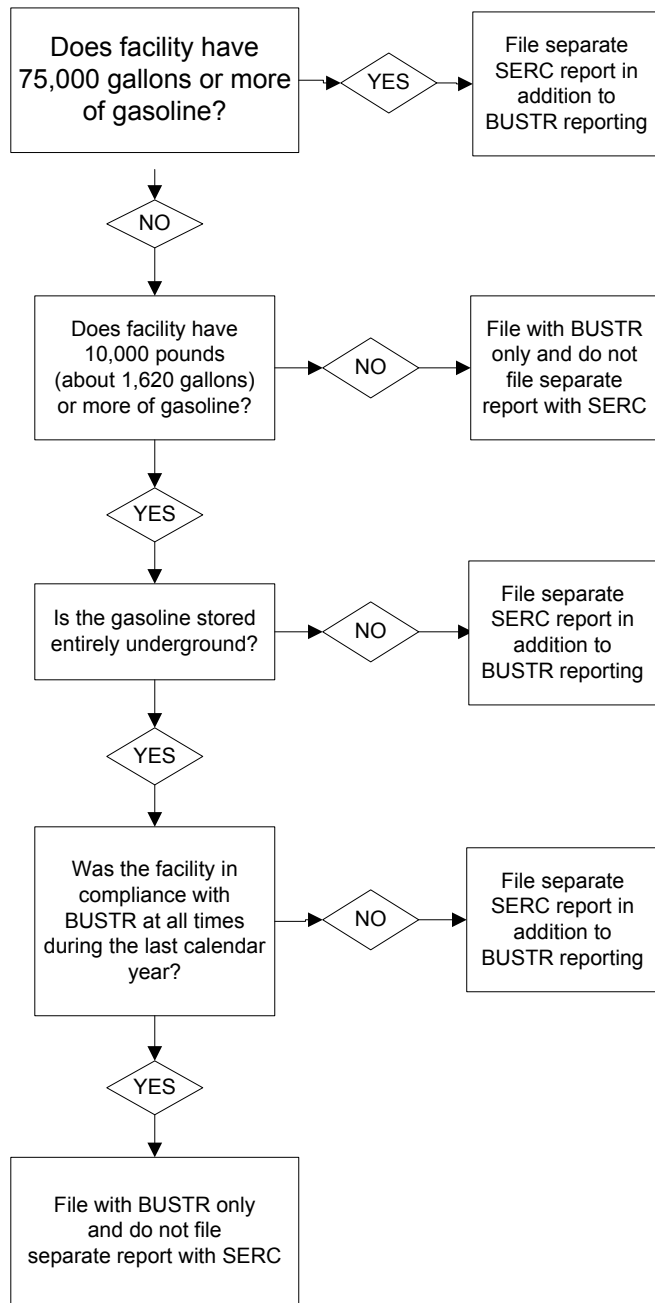
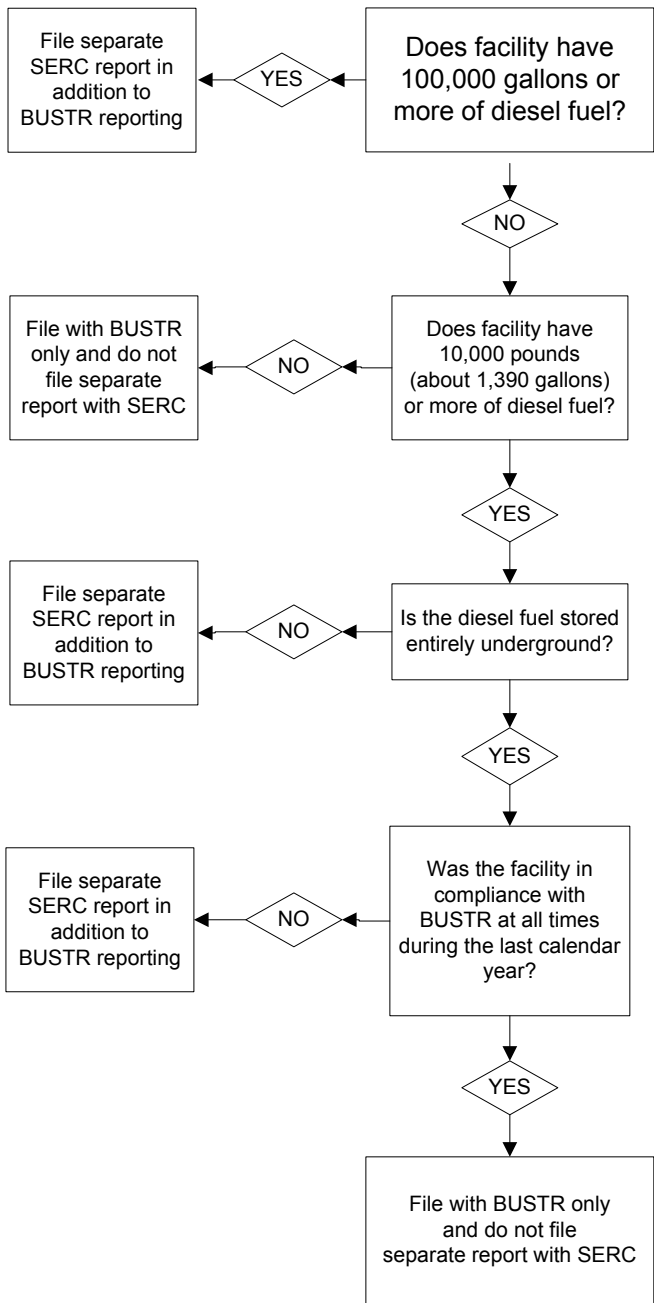


Guide for Ohio Service Station Owners/Operators

To Be Used In Determining Whether To File A Separate Report With The State Emergency Response Commission (SERC)

FACILITIES WITH DIESEL FUEL

FACILITIES WITH GASOLINE



- IMPORTANT NOTE -

If your facility has 10,000 pounds or more of any other hazardous chemical on-site, including kerosene or propane, you must file with SERC for those chemicals. Obtain SERC forms by calling 1-614-644-2260 or download from the SERC web site at www.epa.state.oh.us/derr/derrmain.html.